

---

---

# The Paleo Data Working Group:

## A model for developing and sustaining a community of practice

---

---

TDWG 2021

---

---

Erica Krimmel, Talia Karim, Holly Little, Lindsay Walker, Roger  
Burkhalter, Christina Byrd, Amanda Millhouse, Jessica Utrup

CC-BY 4.0 | <https://doi.org/10.3897/biss.5.74370>

**2010**

US National Science  
Foundation begins  
funding program for  
digitizing collections

**2013**

iDigBio Paleo  
Digitization Working  
Group forms

**2014-2017**

iDigBio Paleo  
Digitization Working  
Group hosts average  
of 5 webinars/year

**2019**

*biodiversity\_next*  
conference

**2020**

“Georeferencing for  
Paleo” workshop



**2020**

Paleo Data Working  
Group forms

# Identifying as a community of practice

*“Communities of practice are groups of people who share a concern or a passion for something they do and learn how to do it better as they interact regularly” (Wenger 1998)*

**domain**  
+  
**community**  
+  
**practice**

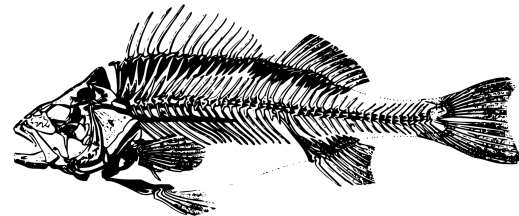


# A community relies on individual people

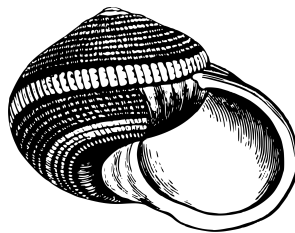


Our domain is at the intersection of disciplines

informatics



*digitization*



Physical  
collection  
curation

RESEARCH



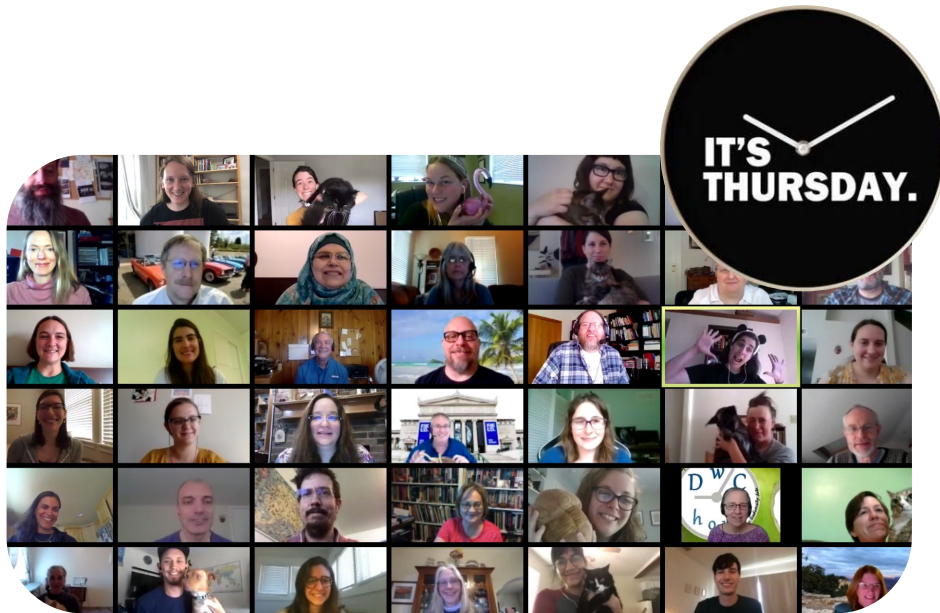
# Individuals operating as a community of practice

## Consistent connectivity

- Biweekly “Happy Hour” meetings
- Slack

## Shared resources

- Google Drive
- Wiki (<https://bit.ly/paleo-digi>)



# “Happy Hour” discussion topics

Past

## Paleo-specific

Stratigraphy  
Preparations  
Anatomy  
Counting  
Casts  
Trace Fossils

## Interdisciplinary

Bionomia  
Wikidata  
Paleobiology Database  
PBOT [Paleobotany]  
GloBI [Biotic Interactions]

## General

Taxonomy  
Georeferencing  
Locality data  
Sensitive localities  
Citations  
Identifiers  
Data cleaning  
Digital assets  
Copyright  
Collection Descriptions

**Conference recaps**

**Open discussion**

Future

## Continuing

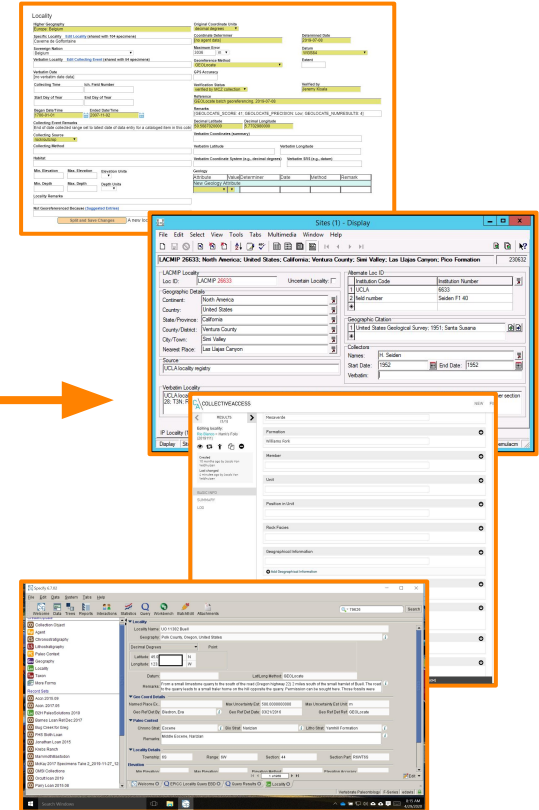
Taxonomy  
Preparations  
Citations  
Locality data

## New

3D digital assets  
dwc:materialSample  
Permits & regulations  
Sharing locality data

# Sharing the burden of staying professionally up-to-date

- Take advantage of individual group members' expertise
- Invite external speakers on topics where no group members have expertise
- Make new content relevant by assigning "homework"
- Divide and conquer when necessary to keep up with emerging work





# Conversations lead to action & implementation

February 2021 Happy Hour with David Shorthouse

- All group members learned about people identifiers
- Many group members got an ORCID ID for the first time
- Some group members added fields in their CMS to capture people identifiers
- Some group members added existing identifiers to people records in their CMS
- Some group members encouraged living researchers & collectors associated with their collections to get ORCID IDs



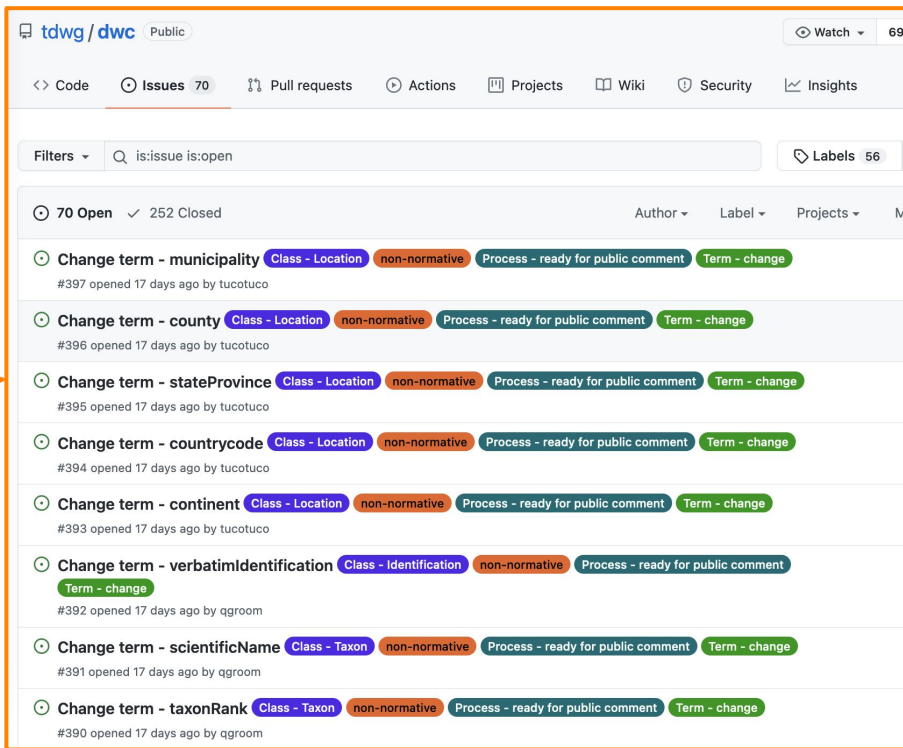
# Conversations lead to action & implementation

At the **local** (i.e., collection) level

At the **institutional** level

At the **data aggregator** level (i.e., aligned across paleo collections)

At the **standards** level



# Connecting to other communities



**TDWG  
Earth Sciences &  
Paleobiology  
Interest  
Group**

**institutions**

NATIONAL  
MUSEUM of  
NATURAL  
HISTORY



NATURAL  
HISTORY  
MUSEUM  
LOS ANGELES COUNTY

**Paleo  
Data  
Working  
Group**

**wikidata**

**TDWG  
Collections  
Description  
Task Group**



# Strategies for success

- Informality keeps the social barrier to entry low
- Maintain consistent connectivity
  - Set a standard schedule (biweekly zoom)
  - Offer multiple ways and times to interact
- Curate shared resources
- Connect new knowledge to actionable examples
- Stay organized - logistical support doesn't magically appear when you need it!

# Strategies for sustaining



# What's next for us?

Extending our community of practice

- presentations and networking at conferences

Actively participating in evolution of standards

- FAIR data: buy-in from data providers
- CARE data: embrace participation from a broad spectrum of perspectives

Biodiversity  
Information  
Standards  
T D W G





# Thank you from the Paleo Data Working Group!



See our other talk in session CO02, tomorrow:  
*Improving the adoption and evolution of data standards for fossil specimens*